

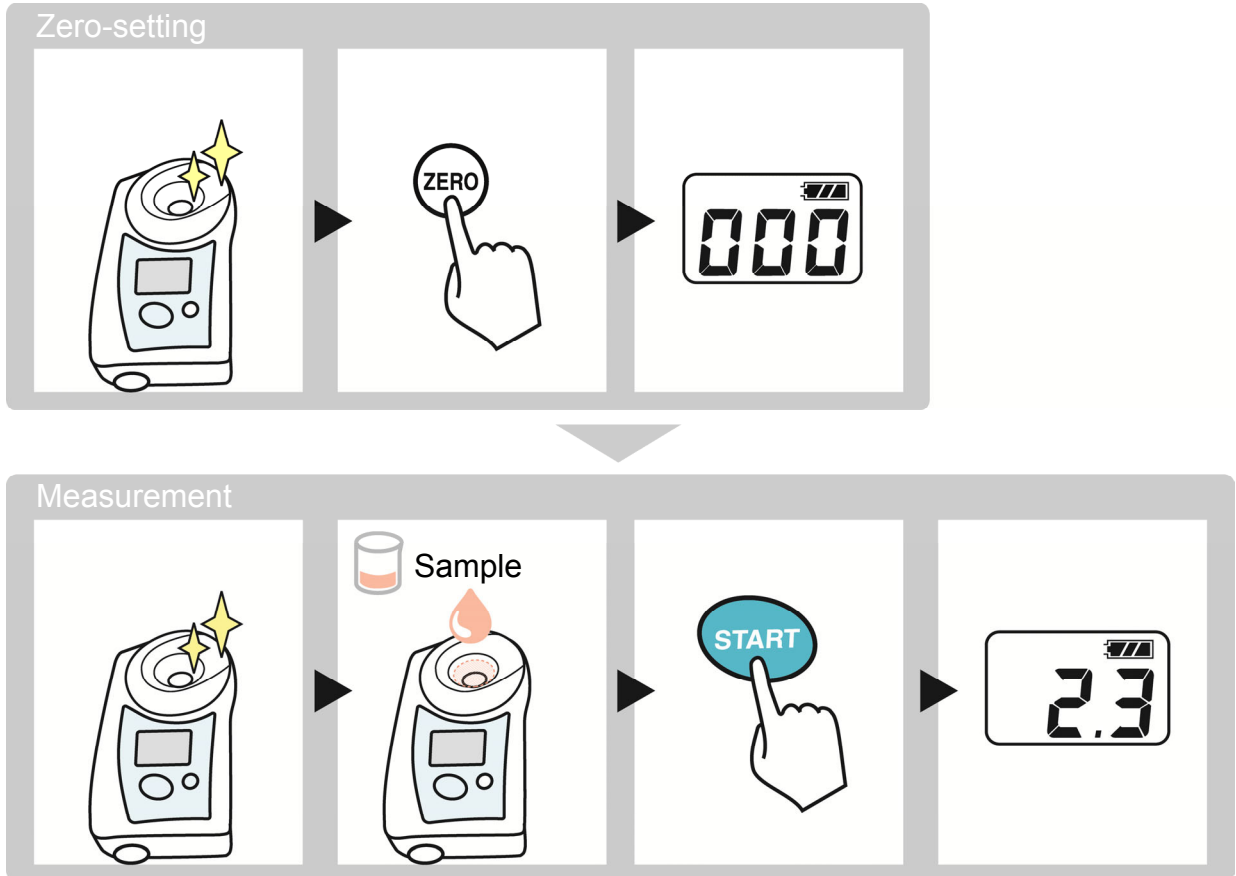


Quick Manual

# PAL-ES

## Salt-meter

### How to Use



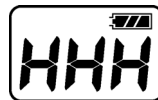
### Error Messages



Zero Set Fault



Low Battery



Out of range  
(too high)



Out of temp. range

### Attention

\*Thoroughly wash and dry after use.

\*Clean oily residues with alcohol or soap.

 **ATAGO CO.,LTD.**

overseas@atago.net <http://www.atago.net/>